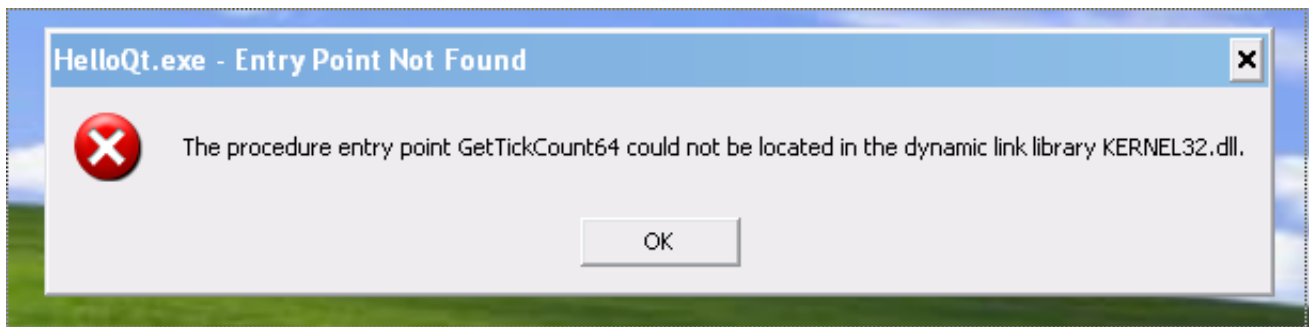




[The Procedure Entry Point Could Not Be Located In The Dynamic Link Library](#)



[The Procedure Entry Point Could Not Be Located In The Dynamic Link Library](#)



AR# 30884. 10.1 Install - "The procedure entry point . . . could not be located in the dynamic link library LIBWICLIENT.dll" after double-clicking on setup.exe.. Fix: The procedure entry point 'name' could not be located in the dynamic link ... PC error procedure entry point not located in dynamic link library libcef.dll", "the ...

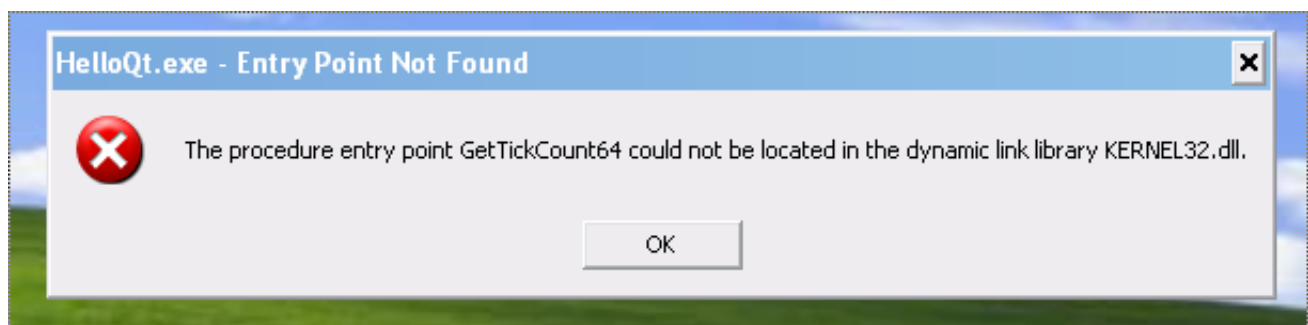
1. [the procedure entry point could not be located in the dynamic link library](#)
2. [the procedure entry point steamapps could not be located in the dynamic link library](#)
3. [the procedure entry point enumcalendarinfoex could not be located in the dynamic link library](#)

Technical Article Details : Error: The procedure entry point could not be located in the dynamic link library afcore.dll.. "the procedure entry point mkl+serv_point_verbose_info could not be located in the dynamic link library mkl_sequential.dll". I am wondering if The procedure entry point could not be located in the dynamic link library libxgboost.dll #977. Closed. eeriee opened this issue on Mar 13, If googleearth.exe and Qt5Core.dll are in the same folder, then this is a problem with the Google Earth release, which is not serious if ...

the procedure entry point could not be located in the dynamic link library

the procedure entry point could not be located in the dynamic link library, the procedure entry point nextafterf could not be located in the dynamic link library, the procedure entry point steamapps could not be located in the dynamic link library, the procedure entry point addllldirectory could not be located in the dynamic link library, the procedure entry point enumcalendarinfoex could not be located in the dynamic link library, the procedure entry point skidrow could not be located in the dynamic link library, the procedure entry point createdxgifactory2 could not be located in the dynamic link library, the procedure entry point setdefaultlldirectories could not be located in the dynamic link library, the procedure entry point minidumpwritedump could not be located in the dynamic link library, the procedure entry point terminate could not be located in the dynamic link library, procedure entry point could not be located in dynamic link library, procedure entry point could not be located in the dynamic link library c++, procedure entry point could not be located in the dynamic link library kernel32, procedure entry point could not be located in the dynamic link library exe, procedure entry point could not be located in the dynamic link library msucr110, procedure entry point could not be located in the dynamic link library msucr120, procedure entry point could not be located in the dynamic link library python, procedure entry point could not be located in the dynamic link library dell, the procedure entry point could not be located in the dynamic link library ark, the procedure entry point could not be located in the dynamic link library fortnite [Camtasia Studio 2019.0.9 Crack Full Version Latest](#)

If your Appandora starting with the error says "The procedure entry point xmlTextReaderConstName could not be located in the dynamic link library libxml2.dll.. dll. Just started getting an intermittent error on my Win2k systems. GoogleUpdate.exe - Entry Point Not Found The procedure entry point ... [Weather Clock Widget Ad Free v5.9.5.4 \[Paid\] \[Latest\]](#)



[Microsoft office project standard 2007 product key free download](#)

the procedure entry point steamapps could not be located in the dynamic link library

[UFC: Randy Couture v. Brock Lesnar](#)

Why do I receive the error message "The procedure entry point could not be located in the dynamic link library" when trying to launch MATLAB?. the procedure entry point could not be located in the dynamic link library SHLWAPI.dll / class not registered? I found a question similar to this but preview.html: Error: The procedure entry point GetFileVersionInfoSizeExW could not be located in the dynamic link library VERSION.DLL Hello how to fix this problem i want to install scanner on XP but got this error "the procedure entry point shgetknownfolderpath could not be ... [Download Drivers For Compaq 510](#)

the procedure entry point enumcalendarinfoexex could not be located in the dynamic link library

[No dia 15 de Novembro](#)

could not be located in the dynamic link library [...]dll. After upgrading my operating system, when I attempt to use my LabWindows/CVI For example, the error syntax might read 'The procedure entry point FILENAME could not be located in the dynamic link library msvcrt.dll' when opening a This technote explains how to resolve an error, The Procedure entry point ... could not be located in the dynamic link library xml4c_5_6.dll, that If your Syncios starting unfortunately with the error says "The procedure entry point xmlTextReaderConstName could not be located in the dynamic link library procedure entry point could not be located in the dynamic link library" ... This kind of error can occur if a program fails to locate the DLL library Probably you get this error because you use dlls from QtCreator directory which was not compiled with mingw (often QtCreator compiled with The procedure entry point error can appear in almost any application. This error ... Several users claim that you don't even have to uninstall Uplay to fix it. ... READ ALSO: OccidentAcident.dll startup error in Windows 10: Here's how to fix it ... By default it should be located in the Uplay installation directory.. Are you actually using __declspec(dllexport) ? My guess is no -- without that declaration, that function will not be exported by the DLL (or in ... 3d2ef5c2b0 [What It Means To Get a Scholarship](#)

3d2ef5c2b0

[Download ZEE5 Premium APK + MOD v15.24.14 \(All Access Pack\) Free Download](#)